



PLANNING COMMISSION AGENDA

Tuesday, April 25, 2023

Planning Commission Public Hearings 6:00 p.m.

Bill Madden, Chair

Joseph Covey Vice Chair

Tom Donini, Commissioner

Blake Perez, Commissioner

Melanie Schlotterbeck Commissioner

This agenda contains a brief general description of each item the Commission will consider. The Planning Division has on file copies of written documentation relating to each item of business on this Agenda available for public inspection. Contact the Planning Division at (714) 990-7674 or view the Agenda and related materials on the City's website at www.cityofbrea.net. Materials related to an item on this agenda submitted after distribution of the agenda packet are available for public inspection in the Planning Division at 1 Civic Center Circle, Brea, CA during normal business hours. Such documents may also be available on the City's website subject to staff's ability to post documents before the meeting.

Procedures for Addressing the Commission

The Commission encourages interested people to address this legislative body by making a brief presentation on a public hearing item when the Chair calls the item or address other items under Matters from the Audience. State Law prohibits the Commission from responding to or acting upon matters not listed on this agenda.

The Commission encourages free expression of all points of view. To allow all persons the opportunity to speak, please keep your remarks to 3 minutes. If others have already expressed your position, you may simply indicate that you agree with a previous speaker. If appropriate, a spokesperson may present the views of your entire group. Commission rules prohibit clapping, booing, or shouts of approval or disagreement from the audience. Please silence all cell phones and other electronic equipment while the Commission is in session. Thank you.

Written comments may be submitted in advance of the meeting by emailing planner@cityofbrea.net. Written comments received by **3 p.m.** on the day of the meeting will be provided to the Commission, will be made available to the public at the meeting, and will be included in the official record of the meeting.

Special Accommodations

In compliance with the Americans with Disabilities Act, if you need special assistance to participate in this meeting, please contact Planning at (714) 990-7674. Notification 48 hours prior to the meeting will enable City staff to make reasonable arrangements to ensure accessibility. (28 CFR 35.102.35.104 ADA Title II)

Important Notice

Your attendance at this public meeting may result in the recording and broadcast of your image and/or voice.

ALL PLANNING COMMISSION DECISIONS MAY BE APPEALED TO THE CITY COUNCIL WITHIN TEN (10) CALENDAR DAYS OF THE MEETING. PLEASE CONTACT THE CITY CLERK AT (714) 990-7756 FOR FURTHER INFORMATION ABOUT FILING AN APPEAL OR OBTAINING AN APPEAL APPLICATION.

PLANNING COMMISSION PUBLIC HEARINGS

**6:00 p.m. - Council Chambers, Plaza Level
and
Via Teleconference - 350 W Central Ave #455
Brea, CA 92821**

- 1. CALL TO ORDER / ROLL CALL - COMMISSION**
- 2. INVOCATION - Pastor Kirk Randolph of Southlands Church**
- 3. PLEDGE OF ALLEGIANCE**
- 4. MATTERS FROM THE AUDIENCE**

CONSENT CALENDAR *The Planning Commission approves all Consent Calendar matters with one motion unless Commission or Staff requests further discussion of a particular item. Items of concern regarding Consent Calendar matters should be presented during "Matters from the Audience."*

- 5.** Receive and File the Quarterly Traffic Monitoring Report for Tentative Parcel Map No. 2016-178 located at the Northwest Corner of Birch Street and State College Boulevard.

ADMINISTRATIVE ITEMS *This agenda category is for Commission consideration of a wide variety of topics. Public comments regarding items in this section should be presented during "Matters from the Audience."*

- 6.** Fiscal Year 2023-24 Capital Improvement Program Finding of Conformance with The General Plan.
- 7. COMMITTEE REPORTS**
- 8. ADJOURNMENT**

City of Brea

PLANNING COMMISSION COMMUNICATION

TO: Honorable Chair and Planning Commission

DATE: 04/25/2023

SUBJECT: Receive and File the Quarterly Traffic Monitoring Report for Tentative Parcel Map No. 2016-178 located at the Northwest Corner of Birch Street and State College Boulevard

RECOMMENDATION

Staff recommends that the Planning Commission receive and file the Quarterly Traffic Monitoring Report identified as a Condition of Approval for Tentative Parcel Map No. 2016-178.

BACKGROUND/DISCUSSION

Pursuant to the adopted Resolution No. PC 2017-05 and Resolution No. PC 2017-07 for Parcel Map No. 2016-178 and Precise Development No. 16-04 respectively, located at the northwest corner of Birch Street and State College Boulevard, the Project was issued Conditions of Approval on June 27, 2017. As part of Condition of Approval “o” for Tentative Parcel Map No. 2016-178, the applicant was required to monitor and report on the traffic signal synchronization operation with adaptive traffic control systems for the Project on a quarterly basis for pre-construction, during the course of the construction, and occupancy of the project up to 100% occupancy and for a period of two (2) years after 100% occupancy.

The Project Developer has retained a traffic engineering consultant to perform the monitoring, and a Quarterly Traffic Monitoring Report has been prepared for reporting to the Planning Commission. Please see the attached Quarterly Traffic Monitoring Report that has been prepared on behalf of the Project applicant.

RESPECTFULLY SUBMITTED

Joanne Hwang, AICP, City Planner

Prepared by: Ryan Chapman, P.E., Assistant City Engineer

Concurrence: Michael Ho, Director of Public Works/City Engineer

Attachments

A. Quarterly Monitoring Report

TECHNICAL MEMORANDUM

To: Ryan Chapman, PE David Roseman, PE City of Brea 1 Civic Center Circle Brea, CA 92821	From: Jason Xu, PE, PTOE, PMP Richard Luo, EIT Iteris, Inc. 1700 Carnegie Avenue, Suite 100 Santa Ana, CA 92705
Date: April 13, 2023	
RE: 2023 Q1 Monitoring Report for Brea Place SynchroGreen Adaptive Signal Operation	

As part of the Brea Place Project, Adaptive Signal Control Technologies (ASCT) system has been deployed along the corridors of State College Boulevard from Brea Mall South to Lambert Road and Birch Street from State College Boulevard to Poplar Avenue. Based on the Conditions of Approval, Iteris will continue to assist the City and Avalon Bay in monitoring adaptive system operation until the building's occupancy rate stabilizes (95% or above) and for a period of two (2) years after 100% occupancy. On June 24, 2022, Avalon Bay received the final Certificate of Occupancy for the Brea Place Project.

This technical memorandum serves as part of a series of quarterly reports submitted to facilitate monitoring and reporting the system performance along the two corridors. Performance measures discussed in this report have been monitored to track the performance status from January to March 2023. This memorandum provides a comparison of signal performance between the current study period and the "after" study condition to track changes and identify potential for timing parameter finetuning along the corridors.

Based on the continual monitoring studies, the ASCT system performs per system design and deploys optimal traffic signal coordination strategies according to the project specifications. In the past two years, the ASCT system has recommended and deployed dynamic coordination cycles to address pandemic's unpredictable traffic patterns. The green times assigned to each signal phase have also been optimized to accommodate real-time traffic patterns.

1. PROJECT OVERVIEW

State College Boulevard is a major north-south arterial running parallel to State Route 57 between Brea Boulevard and the southern city limit. There are seven (7) signalized intersections on this mile-long segment with a posted speed of 40 mph. Birch Street is a major east-west arterial running parallel to Imperial Highway and is bounded by Brea Boulevard to the west and Valencia Avenue to the east. This project includes five (5) signalized intersections along this half-mile stretch of Birch Street with a posted speed of 35 mph. SynchroGreen ASCT system has been deployed at the following signalized intersections:

1. State College Boulevard at Brea Mall South
2. State College Boulevard at Brea Mall Center
3. State College Boulevard at Brea Mall North
4. State College Boulevard at Birch Street
5. State College Boulevard at Brea Place
6. State College Boulevard at Avocado Street

7. State College Boulevard at Lambert Road
8. Birch Street at Brea Mall
9. Birch Street at Civic Center
10. Birch Street at Randolph Avenue
11. Birch Street at Poplar Avenue

2. METHODOLOGY

The project's continual monitoring is conducted using the travel time data generated from a Bluetooth system on a quarterly basis with supplementary floating car surveys for each of 12 months.

In order to evaluate the ASCT system operational performance, Bluetooth roadside units (RSU) were installed at each of project intersections to collect real-time traffic data. The system detects anonymous Bluetooth/Wi-Fi signal broadcast from mobile devices to determine travel times and speeds on a continuous basis. This project utilizes the travel time pair/route report in 5-minute intervals with the option of individual speeds and number of matches. The valid pair/route data are then processed to produce travel time reports for each direction of the study corridors. The pair/route data include the following information:

- **Average Travel Time** – Time taken to travel between paired locations. The average of travel times for a specific set of matches or trips (seconds)
- **Historical Average Travel Time** – Historical average travel time for the entire period since the inception of the system (seconds)
- **Average Travel Speed** – Calculated average speed based on the time taken to travel between paired locations (mph)

The monitoring phases also use the Bluetooth data to compare against the “after” study report that was approved by the City in 2021 as the baseline condition.

3. CONTINUAL MONITORING

3.1 BlueTOAD Data Analysis

To measure the effects of the SynchroGreen ASCT system, travel time and speed data were extracted from the BlueTOAD system for January, February, and March on typical weekdays (Tuesday, Wednesday, and Thursday). **Tables 1 and 2** on the next page summarize the results of the travel time and average speed analysis. The measures of effectiveness (MOE) are also compared with the “after” study that was collected in September 2020 following the implementation and finetuning of the SynchroGreen system. The detailed reports are included in **Attachment A**.

As shown in **Table 1**, the overall performance of Birch Street has improved compared to the “after” study condition. The average corridor travel time and speed in 2023 have also slightly improved when compared to the two previous quarters.

It should be noted that the entire Birch corridor was synchronized by a separate project prior to the deployment of the SynchroGreen adaptive system. The signals outside of the study segment are coordinated at fixed cycles that may differ from the cycle lengths that the adaptive system optimized and implemented for the real-time traffic patterns.

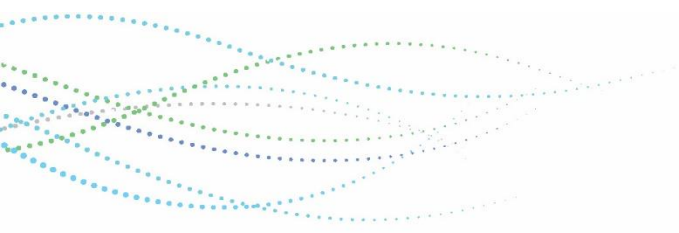


Table 1 – MOE Comparison for Birch Street

Direction	Performance Measure	After Study	January 2023				February 2023			March 2023		
		MOE	MOE	Diff.	% Diff.	MOE	Diff.	% Diff.	MOE	Diff.	% Diff.	
AM Peak												
EB	Travel Time (sec)	60	61	1	2%	59	-1	-2%	60	0	0%	
	Speed (mph)	23	23	0	0%	24	1	4%	24	1	4%	
WB	Travel Time (sec)	67	44	-23	-34%	44	-23	-34%	43	-24	-36%	
	Speed (mph)	22	32	10	45%	32	10	45%	32	10	45%	
Corridor Average	Travel Time (sec)	64	53	-11	-17%	52	-12	-19%	52	-12	-19%	
	Speed (mph)	23	28	5	22%	28	5	22%	28	5	22%	
PM Peak												
EB	Travel Time (sec)	66	65	-1	-2%	61	-5	-8%	63	-3	-5%	
	Speed (mph)	22	22	0	0%	23	1	5%	23	1	5%	
WB	Travel Time (sec)	75	52	-23	-31%	52	-23	-31%	53	-22	-29%	
	Speed (mph)	19	27	8	42%	27	8	42%	27	8	42%	
Corridor Average	Travel Time (sec)	71	58	-13	-18%	56	-15	-21%	58	-13	-18%	
	Speed (mph)	21	25	4	19%	25	4	19%	25	4	19%	

Note: XX – MOE improvement with decreased travel time or increased average speed
XX – MOE deterioration with increased travel time or decreased average speed
 XX – No MOE change

Table 2 on the following page shows that the average travel times and speed on State College Boulevard southbound have either maintained or improved during both peak periods. In the northbound direction, the travel time and delay are typically higher than the 2020 “after” study due to the facts that traffic has been rebounding to pre-pandemic level and the intersection of State College Boulevard and Lambert Road is running under a special SynchroGreen Zone with pre-defined coordination cycles that allows this signal to synchronize with SR-57 ramp signals on Lambert instead of responding to the adaptive control demands.

Despite the above, it is worth noting that the northbound travel time and speed have improved compared to the two previous quarters, especially during the PM peak. This is due to the lengthened cycle length along Lambert Road from State College to SR-57 ramps. This extension has helped mitigate the traffic backup caused by ramp signals blocking State College Boulevard.

Table 2 – MOE Comparison for State College Boulevard

Direction	Performance Measure	After Study	January 2023			February 2023			March 2023		
		MOE	MOE	Diff.	% Diff.	MOE	Diff.	% Diff.	MOE	Diff.	% Diff.
AM Peak											
NB	Travel Time (sec)	129	138	9	7%	140	11	9%	140	11	9%
	Speed (mph)	26	26	0	0%	26	-1	-4%	25	-1	-4%
SB	Travel Time (sec)	142	133	-9	-6%	145	3	2%	138	-4	-3%
	Speed (mph)	24	27	3	13%	25	1	4%	26	2	8%
Corridor Average	Travel Time (sec)	136	135	-1	-1%	142	6	4%	139	3	2%
	Speed (mph)	25	27	2	8%	25	0	0%	26	1	4%
PM Peak											
NB	Travel Time (sec)	154	172	18	12%	175	21	14%	170	16	10%
	Speed (mph)	22	21	-1	-5%	20	-2	-9%	21	-1	-5%
SB	Travel Time (sec)	176	147	-29	-16%	151	-25	-14%	152	-24	-14%
	Speed (mph)	19	25	6	32%	23	4	21%	23	4	21%
Corridor Average	Travel Time (sec)	165	159	-6	-4%	163	-2	-1%	161	-4	-2%
	Speed (mph)	21	23	2	10%	22	1	5%	22	1	5%

Note: XX – MOE improvement with decreased travel time or increased average speed
 XX – MOE deterioration with increased travel time or decreased average speed
 XX – No MOE change

To further illustrate the travel time patterns along study corridors, average travel time was plotted using the BlueTOAD data for each month of this quarter and for Q4 2022 in **Figures 1** through **4**. Travel times for both Birch Street and State College Boulevard have remained consistent with Q4.

Figure 1 – Average Travel Time for Birch Street EB

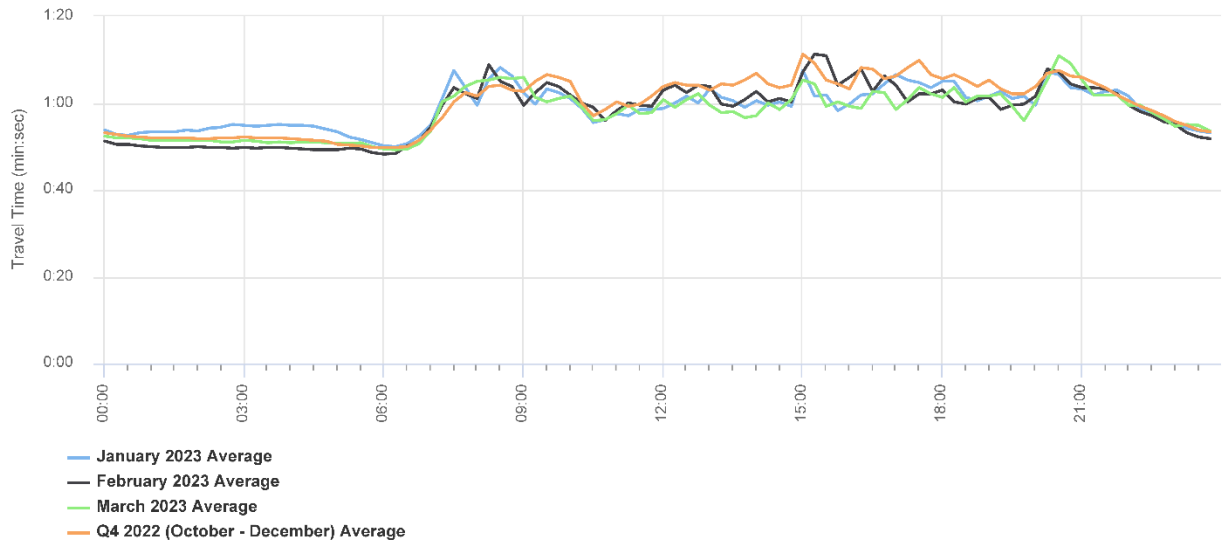


Figure 2 – Average Travel Time for Birch Street WB

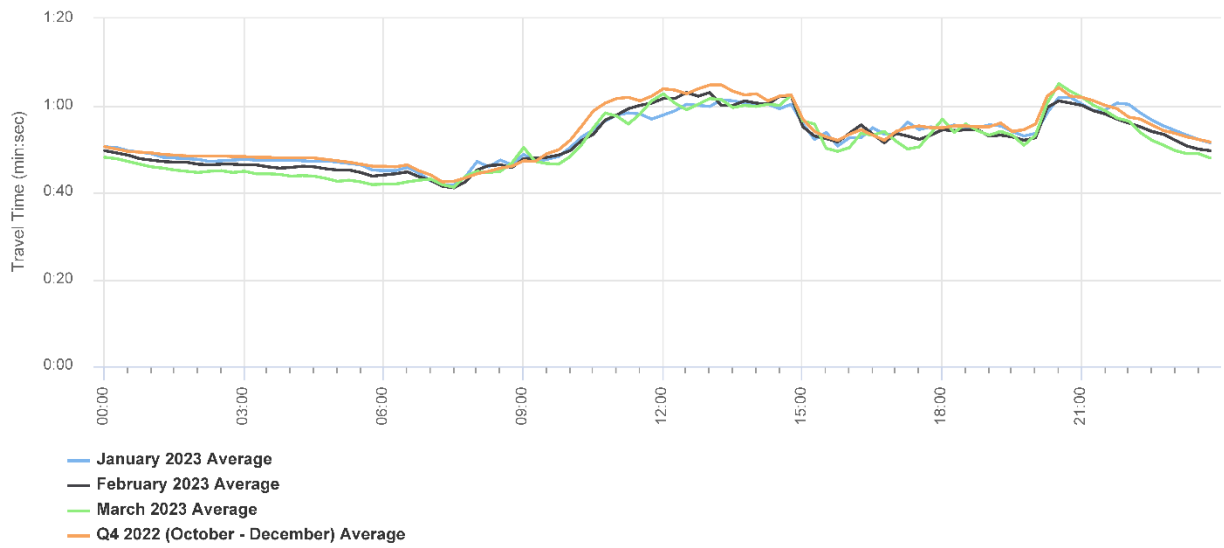


Figure 3 – Average Travel Time for State College Boulevard NB

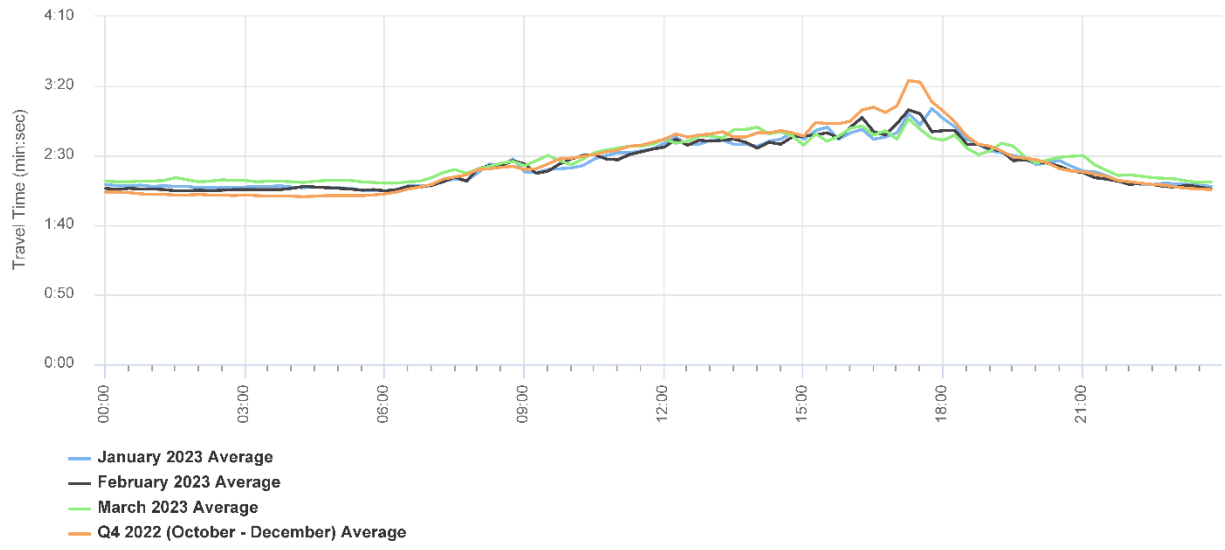
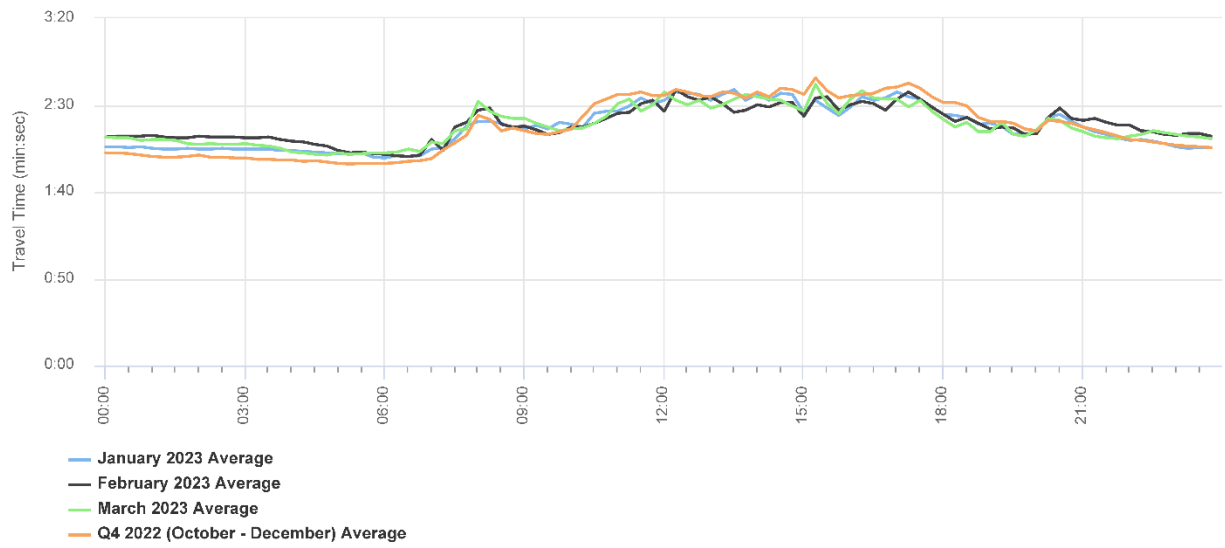


Figure 4 – Average Travel Time for State College Boulevard SB



3.2 SynchroGreen Monitoring

The SynchroGreen adaptive control module responds to traffic fluctuation and deploys timing optimization strategies for the following peak periods:

- Weekday - 6:30 AM to 8:00 PM
- Weekend - 7:00 AM to 7:00 PM (State College Boulevard and Lambert Road operates in “Free” mode during the weekend)

The SynchroGreen reports have been routinely reviewed during continual monitoring phase, including Controller Error Report, System Master Error Report, Split Termination Report, Green Time Utilization/Cycle Report, and Alarm Dashboard. To present a high-level summary of signal operation, the typical weekday coordination cycle lengths were extracted from SynchroGreen reports and are presented in **Figures 5 through 7** for each month of this study period. They illustrate cycle lengths that the adaptive control system optimized and deployed at project signals (excluding State College and Lambert). Compared to the daily average cycles reported in previous reports, the weekday cycle length charts provide a more detailed and visual illustration of the variability of implemented cycles throughout a weekday.

Overall, the cycle lengths implemented by Signal Adaptive Control are more flexible and lower than the traditional time-of-day coordination plans. A major jump in cycle length was typically observed around 10:00 AM and 2:45 PM when the system transitions from one base plan to another. The system then quickly returns to normal coordination operation with a short transition period.

Figure 5 – Weekday Cycle Lengths for January 2023

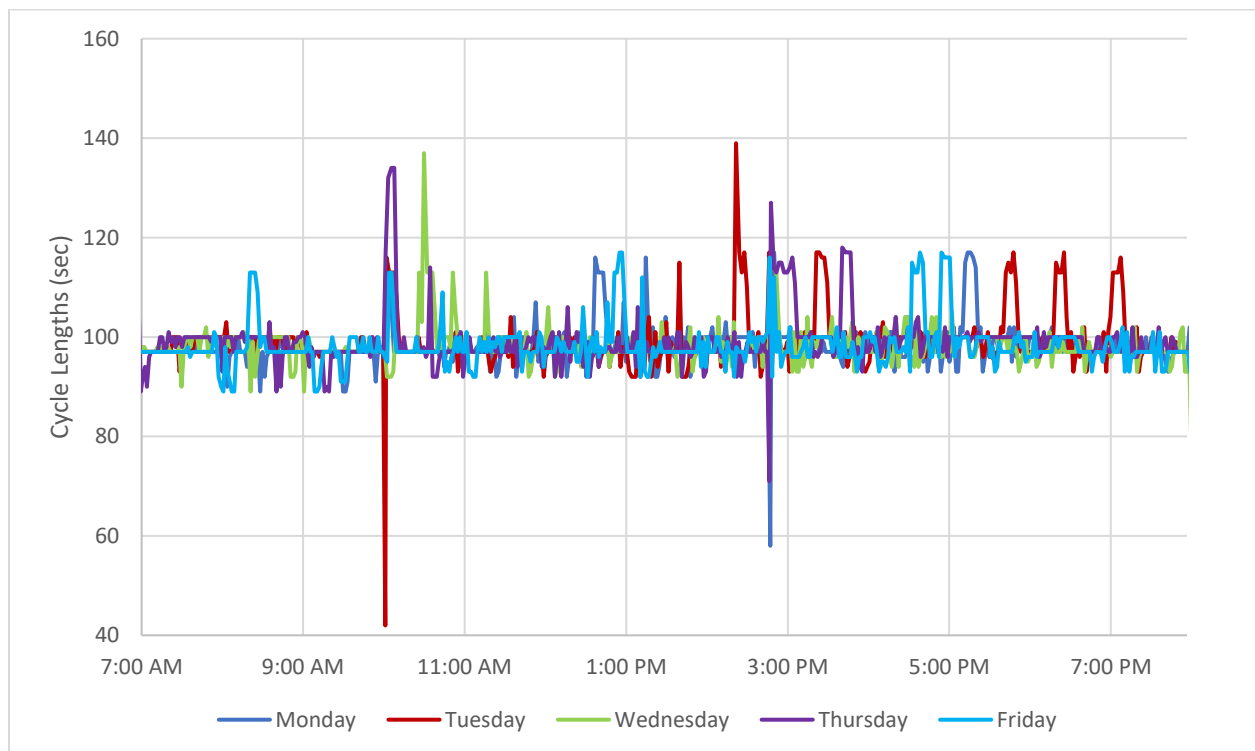


Figure 6 – Weekday Cycle Lengths for February 2023

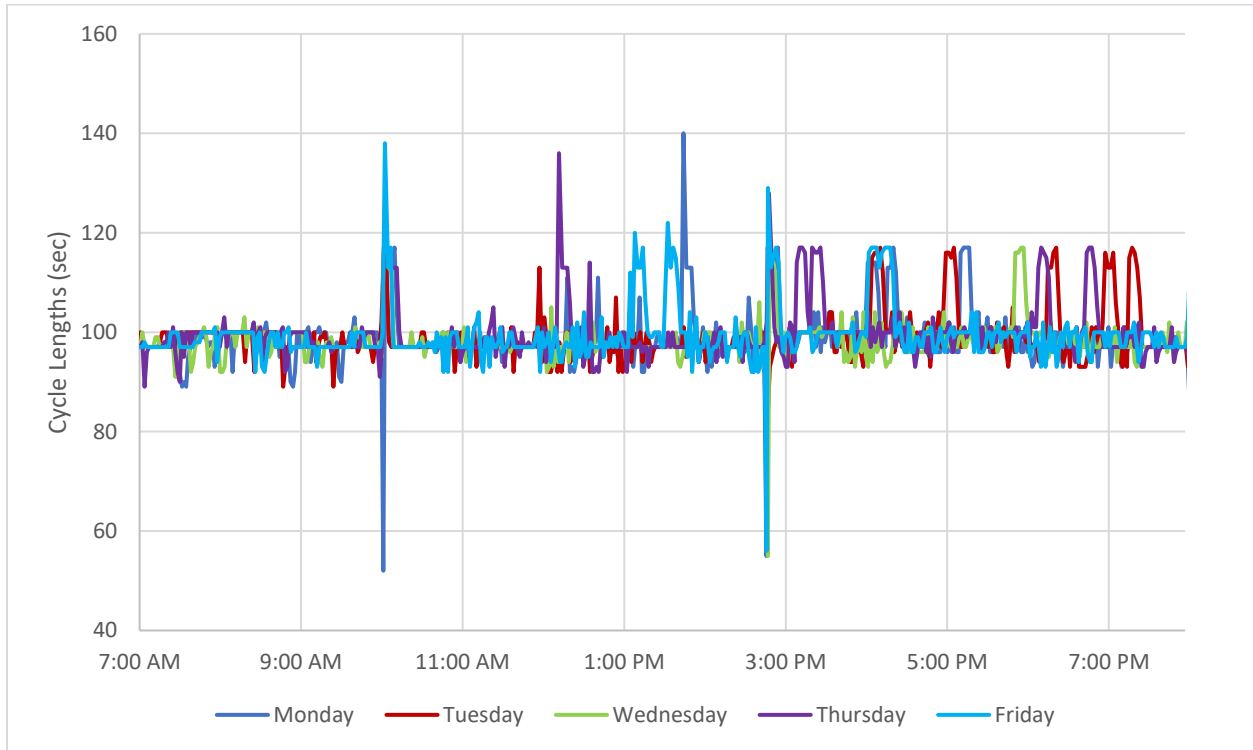
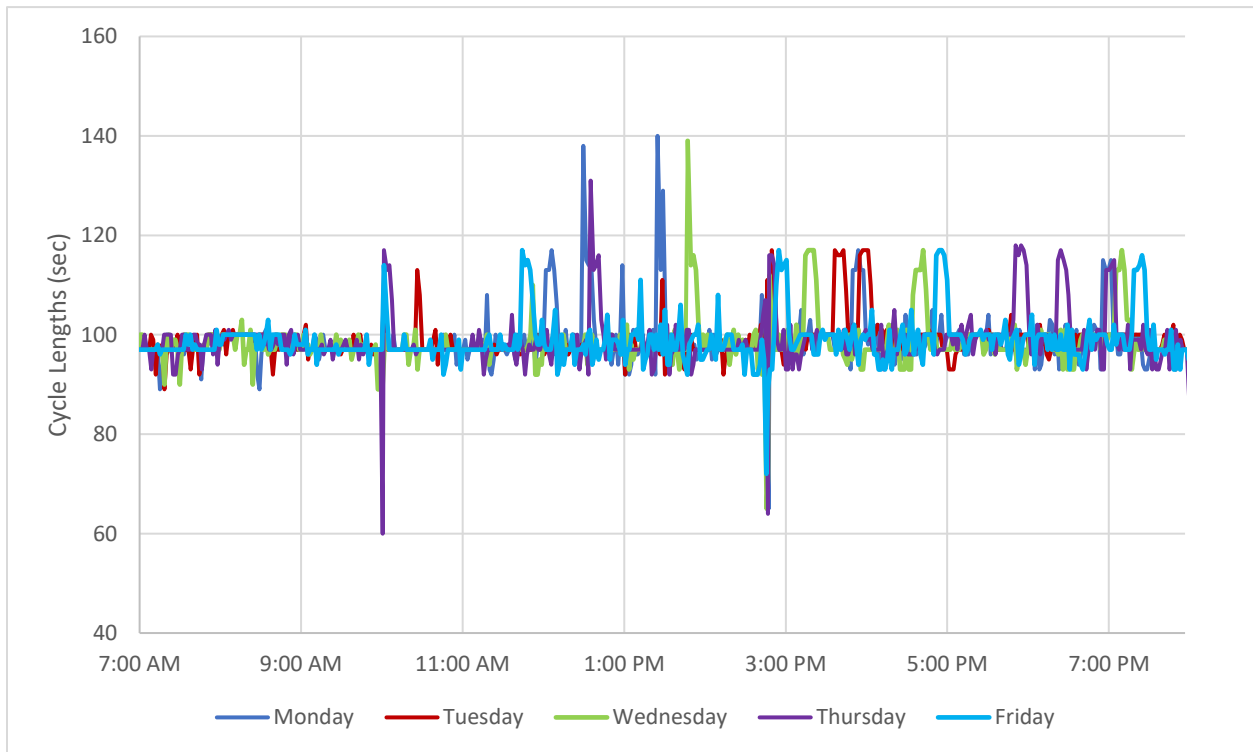


Figure 7 – Weekday Cycle Lengths for March 2022

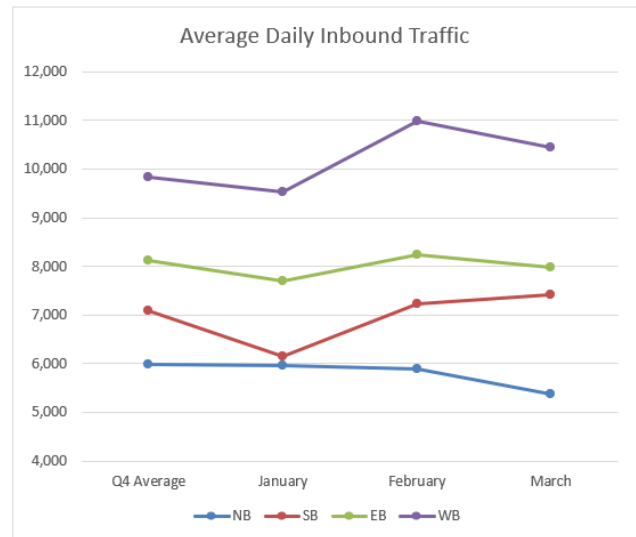


3.3 Other Finetuning and Observations

To illustrate the trend of traffic changes during this monitoring period, daily inbound/outbound traffic were extracted from ATMS.now System Reports for the intersection of State College Boulevard and Birch Street for five consecutive weekdays. **Figure 8** below shows the inbound traffic at this location and compares it to Q4 2022. The data indicates that the traffic volumes remain consistent with the previous study period (Q4 2022).

Figure 8 –Traffic Comparison at State College Boulevard and Birch Street

	NB	SB	EB	WB	Total
Q4 Average	5,990	7,080	8,126	9,827	31,023
January	5,953	6,158	7,711	9,523	29,345
February	5,882	7,232	8,241	10,982	32,337
March	5,378	7,423	7,977	10,441	31,219
Q1 Average	5,738	6,938	7,976	10,315	30,967
Inbound Traffic % Difference between 2022 Q4 and 2023 Q1	-4%	-2%	-2%	5%	0%



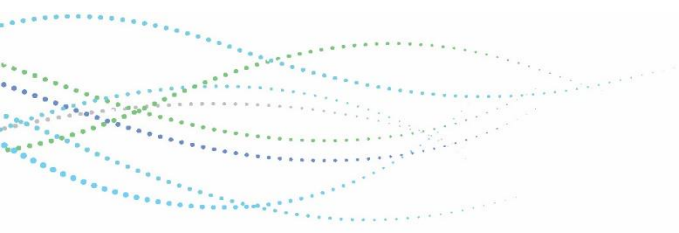
The following monitoring activities have also been conducted by Iteris as part of monitoring efforts:

- Operation monitoring and video detection troubleshooting at State College Boulevard and Lambert Road
- Operation monitoring and video detection troubleshooting at State College Boulevard and Birch Street
- Field Review of PM peak
- Caltrans coordination for troubleshooting of controller clock at SR-57 ramp signals.

4. NEXT STEPS

Overall, all 11 signalized intersections have been operating at optimal and acceptable levels of services under the adaptive signal control. Iteris will continue to monitor the progression and travel time along the two corridors and adjust system settings as necessary to optimize the target cycle lengths and to enhance the traffic progression.

ATTACHMENT A - BLUETOOTH TRAVEL TIME REPORTS



BlueTOAD Historical Report

Birch EB, Averages

Pair/Route

cabrea-350854: (Y22-Birch EB (Randolph to State College))

Comparison Index #1

Historical Avg of Tue/Wed/Thu: From 2023-01-17 to 2023-01-19

Comparison Index #2

Historical Avg of Tue/Wed/Thu: From 2023-02-07 to 2023-02-09

Comparison Index #3

Historical Avg of Tue/Wed/Thu: From 2023-03-14 to 2023-03-16

Time	January 17 - January 19		February 7 - February 9		March 14 - March 16	
	Tues, Wed, Thurs		Tues, Wed, Thurs		Tues, Wed, Thurs	
	Speed (mph)	Travel Time (s)	Speed (mph)	Travel Time (s)	Speed (mph)	Travel Time (s)
0:00	25.2	56	27	52	27.4	51
0:15	25.2	56	27.2	52	27.6	51
0:30	24.3	58	27.1	52	27.4	51
0:45	23.1	61	27.2	52	27.8	51
1:00	22.7	62	27.3	51	28.5	49
1:15	22.1	64	27.4	51	28.2	50
1:30	22.1	64	27.6	51	28	50
1:45	21.8	64	27.7	51	28.2	50
2:00	21.5	65	27.8	51	28.4	49
2:15	21.7	65	27.7	51	28.4	49
2:30	21.4	66	27.6	51	28.5	49
2:45	21	67	27.4	51	28.5	49
3:00	20.9	67	27.6	51	28.1	50
3:15	21	67	27.8	51	28.5	49
3:30	20.6	68	27.7	51	28.4	49
3:45	19.8	71	27.6	51	28.3	50
4:00	19.8	71	27.8	51	28.2	50
4:15	19.6	72	27.8	51	27.8	51
4:30	19.9	71	27.9	50	27.8	51
4:45	20.5	68	27.9	50	27.7	51
5:00	21.1	67	28.1	50	27.4	51
5:15	21.6	65	28.1	50	27.3	51
5:30	22.2	63	27.8	51	27.1	52
5:45	23	61	28	50	28.1	50
6:00	24.9	56	28.4	49	28.4	49
6:15	25.1	56	28.3	50	28.1	50
6:30	26.7	53	27.4	51	27.8	51
6:45	26.7	53	27.3	51	27.3	51
7:00	26.2	54	26	54	25.8	54
7:15	24.7	57	24.7	57	23.4	60
7:30	21.8	64	23.4	60	24	59
7:45	23.2	61	22.6	62	24.7	57
8:00	26.6	53	24.6	57	23.8	59
8:15	22.3	63	23.8	59	23.5	60
8:30	21.1	67	23.1	61	23.2	61
8:45	20.7	68	22.4	63	21.4	66
9:00	22.7	62	21.9	64	20.2	70
9:15	22.3	63	23.1	61	22.7	62
9:30	22	64	22.2	63	23.6	59
9:45	23	61	22.9	61	22.9	61
10:00	23.3	60	23.3	60	21.5	65
10:15	25	56	23	61	22.8	62
10:30	27.3	51	24.1	58	24.7	57
10:45	26.6	53	25.8	54	24.1	58
11:00	24.6	57	24.8	57	24.9	56
11:15	24.5	57	23.8	59	23.1	61
11:30	21.6	65	23.1	61	23.9	59

11:45	21.9	64	24.1	58	25.4	55
12:00	24.4	58	25.2	56	22.6	62
12:15	23.7	59	22.6	62	23.9	59
12:30	23.9	59	22.6	62	23.3	60
12:45	24	59	23.3	60	23	61
13:00	22.6	62	23.6	59	23.2	61
13:15	24.8	57	24.3	58	24.8	57
13:30	23.5	60	24.6	57	23.6	59
13:45	23.7	59	23.9	59	23.6	59
14:00	22.4	63	22.6	62	23.9	59
14:15	23.7	59	23.2	61	23	61
14:30	22.9	61	22.9	61	23.9	59
14:45	24.1	58	25.2	56	22.6	62
15:00	19.5	72	23.7	59	18.6	75
15:15	24.5	57	22.8	62	22.8	62
15:30	24.8	57	22.8	62	22.3	63
15:45	24.3	58	24.6	57	22.9	61
16:00	23	61	21.5	65	21.4	66
16:15	22.6	62	23.1	61	23.3	60
16:30	22.1	64	23.1	61	21.6	65
16:45	21.7	65	23.5	60	22.6	62
17:00	20.1	70	22.7	62	23.8	59
17:15	22.3	63	25	56	23.3	60
17:30	21.8	64	22.3	63	21.6	65
17:45	20.3	69	24.1	58	22.5	62
18:00	22.1	64	20.7	68	21.6	65
18:15	23.3	60	23.3	60	23.5	60
18:30	24.5	57	24	59	22.5	62
18:45	26.1	54	22.8	62	20.8	68
19:00	24	59	21.4	66	23.4	60
19:15	21.1	67	23.6	59	21.3	66
19:30	23.5	60	21.8	64	23.3	60
19:45	24.4	58	23.3	60	25.6	55
20:00	24.8	57	23.1	61	24.3	58
20:15	20.6	68	20.7	68	21.8	64
20:30	20.3	69	20	70	20	70
20:45	21.5	65	22.1	64	19.9	71
21:00	22.3	63	23.5	60	20.8	68
21:15	22.5	62	22.9	61	21.6	65
21:30	21.4	66	22.7	62	22.3	63
21:45	20.2	70	23.4	60	22.4	63
22:00	21.8	64	24.7	57	23.1	61
22:15	23.1	61	25.2	56	22.4	63
22:30	24	59	25.6	55	23	61
22:45	24.3	58	26.2	54	23.9	59
23:00	24.1	58	26.5	53	25.3	55
23:15	24.3	58	27.3	51	25.3	55
23:30	24	59	27.4	51	25.1	56
23:45	23.8	59	27.7	51	25.9	54

BlueTOAD Historical Report

Birch WB, Averages

Pair/Route

cabrea-350860: (Y22-Birch WB (State College to Randolph))

Comparison Index #1

Historical Avg of Tue/Wed/Thu: From 2023-01-17 to 2023-01-19

Comparison Index #2

Historical Avg of Tue/Wed/Thu: From 2023-02-07 to 2023-02-09

Comparison Index #3

Historical Avg of Tue/Wed/Thu: From 2023-03-14 to 2023-03-16

Time	January 17 - January 19		February 7 - February 9		March 14 - March 16	
	Speed (mph)	Travel Time (s)	Speed (mph)	Travel Time (s)	Speed (mph)	Travel Time (s)
0:00	28.6	49	28.2	50	29.5	48
0:15	28.8	49	28.4	49	29.7	47
0:30	29	48	28.9	49	30.3	46
0:45	29	48	29.8	47	30.7	46
1:00	29.3	48	30	47	31.1	45
1:15	29.7	47	30.2	46	31.3	45
1:30	29.9	47	30.3	46	31.7	44
1:45	30	47	30.4	46	31.6	44
2:00	29.9	47	30.8	46	31.8	44
2:15	30.2	46	30.8	46	31.8	44
2:30	30.1	47	30.4	46	31.7	44
2:45	30.1	47	30.3	46	32.4	43
3:00	30	47	30.3	46	31.7	44
3:15	29.7	47	30.4	46	32.7	43
3:30	29.8	47	30.5	46	32.8	43
3:45	29.9	47	30.6	46	32.8	43
4:00	29.9	47	30.6	46	32.8	43
4:15	29.9	47	30.3	46	32.7	43
4:30	29.9	47	30.2	46	33	43
4:45	29.8	47	30.7	46	33.1	42
5:00	29.6	47	30.5	46	32.9	43
5:15	29.6	47	30.7	46	33	43
5:30	30.1	47	31.1	45	33.8	42
5:45	30.8	46	31.4	45	34	41
6:00	29.5	48	31.2	45	33.9	41
6:15	28.9	49	31.8	44	34	41
6:30	29	48	31	45	33.2	42
6:45	30.9	45	33.3	42	33.1	42
7:00	31.9	44	34	41	32.7	43
7:15	34.1	41	33.9	41	32.7	43
7:30	35.2	40	33.7	42	32.8	43
7:45	32.5	43	33.1	42	32.1	44
8:00	31.3	45	30.9	45	33	43
8:15	30.9	45	30.4	46	33.4	42
8:30	27.5	51	29.9	47	31.2	45
8:45	30.1	47	28.5	49	31.4	45
9:00	28.1	50	30.2	46	29.9	47
9:15	28.5	49	30.4	46	30.2	46
9:30	28.7	49	29.9	47	29.9	47
9:45	28.8	49	30	47	30.6	46
10:00	27.1	52	29.5	48	28.2	50
10:15	26.5	53	27.1	52	27.9	50
10:30	24.7	57	26.3	53	26.1	54
10:45	24.1	58	24.6	57	24.4	58
11:00	24.1	58	23.6	59	25.4	55
11:15	23.3	60	22.9	61	25.4	55
11:30	22.9	61	22.8	62	23.6	59
11:45	22.6	62	23.3	60	22.8	62

12:00	22.9	61	23.5	60	22.7	62
12:15	22.7	62	23.2	61	23.2	61
12:30	22.9	61	21.6	65	21.8	64
12:45	22.9	61	21	67	22.5	62
13:00	22.9	61	22	64	23.8	59
13:15	23.1	61	23.6	59	23.3	60
13:30	22.1	64	22.8	62	23.4	60
13:45	23.1	61	22.5	62	23.8	59
14:00	24	59	22	64	24.1	58
14:15	22.6	62	24	59	23.4	60
14:30	22.5	62	20.5	68	23.8	59
14:45	22.9	61	22.5	62	22.1	64
15:00	24.4	58	25.1	56	23.4	60
15:15	27.1	52	27.3	51	25.5	55
15:30	27.8	51	27.2	52	29	48
15:45	26.9	52	27.4	51	27.3	51
16:00	26.8	52	27.4	51	27.1	52
16:15	27.1	52	26.2	54	26.2	54
16:30	24.8	57	27.6	51	25.4	55
16:45	24.5	57	29	48	25.7	55
17:00	25.2	56	26.4	53	26	54
17:15	25.1	56	27.4	51	27.9	50
17:30	25.4	55	26.9	52	28.1	50
17:45	25.5	55	27	52	25.4	55
18:00	26.7	53	24.3	58	24.5	57
18:15	25.5	55	26.3	53	26	54
18:30	26.1	54	26	54	24.8	57
18:45	26.8	52	25.4	55	26	54
19:00	26.3	53	26.1	54	26.3	53
19:15	25.5	55	25.2	56	26.3	53
19:30	26.7	53	25.8	54	26.6	53
19:45	27.6	51	27.3	51	27	52
20:00	26.9	52	26.4	53	25.4	55
20:15	23.9	59	23	61	23.6	59
20:30	21.4	66	22.6	62	21.5	65
20:45	21.7	65	22.7	62	21.6	65
21:00	23.5	60	22.9	61	21.9	64
21:15	24.6	57	23	61	22.7	62
21:30	24.4	58	22.8	62	23.8	59
21:45	23	61	23.9	59	25.2	56
22:00	23.5	60	24.8	57	25	56
22:15	24	59	25.3	55	26	54
22:30	24.4	58	26.3	53	26.5	53
22:45	24.6	57	27.3	51	27.5	51
23:00	25.1	56	28	50	28.4	49
23:15	25.6	55	28.6	49	28.3	50
23:30	26.3	53	28.8	49	28.2	50
23:45	26.7	53	28.9	49	28.1	50

BlueTOAD Historical Report

State College NB, Averages

Pair/Route

cabrea-337942: (Y22-State College NB (Brea Mall S to Lambert))

Comparison Index #1

Historical Avg of Tue/Wed/Thu: From 2023-01-17 to 2023-01-19

Comparison Index #2

Historical Avg of Tue/Wed/Thu: From 2023-02-07 to 2023-02-09

Comparison Index #3

Historical Avg of Tue/Wed/Thu: From 2023-03-14 to 2023-03-16

Time	January 17 - January 19		February 7 - February 9		March 14 - March 16	
	Tues, Wed, Thurs		Tues, Wed, Thurs		Tues, Wed, Thurs	
	Speed (mph)	Travel Time (s)	Speed (mph)	Travel Time (s)	Speed (mph)	Travel Time (s)
0:00	26.4	134	27.5	128	25.9	136
0:15	26.7	132	27.6	128	26.8	132
0:30	26.9	131	27.7	127	26.7	132
0:45	27	131	27.7	127	26.5	133
1:00	27.1	130	27.8	127	26.5	133
1:15	27	131	27.9	126	26.4	134
1:30	26.9	131	28.1	126	26.2	135
1:45	26.9	131	28.1	126	26.2	135
2:00	26.8	132	27.8	127	26.1	135
2:15	27	131	27.9	126	26	136
2:30	27	131	28	126	26.1	135
2:45	27	131	28	126	26.3	134
3:00	26.9	131	28	126	26.4	134
3:15	27	131	27.8	127	26.8	132
3:30	26.9	131	27.9	126	26.6	133
3:45	26.8	132	28	126	27	131
4:00	27	131	27.5	128	27.2	130
4:15	27	131	27.1	130	27.4	129
4:30	26.8	132	27	131	27.4	129
4:45	27	131	27.6	128	27.5	128
5:00	26.8	132	27.6	128	27.2	130
5:15	26.9	131	28	126	26.9	131
5:30	27.6	128	28.4	124	27	131
5:45	28.1	126	28	126	27	131
6:00	28.4	124	28.3	125	27.3	129
6:15	27.8	127	28.5	124	27.3	129
6:30	27.4	129	28.1	126	27.2	130
6:45	27.6	128	28.4	124	27	131
7:00	27.6	128	28.2	125	26.6	133
7:15	26.3	134	27.4	129	25.8	137
7:30	25.4	139	26.6	133	24.5	144
7:45	26.1	135	26.8	132	25.6	138
8:00	25.1	141	24.7	143	25.4	139
8:15	23.8	148	23.3	151	25.4	139
8:30	22.2	159	22.9	154	24.9	142
8:45	22.6	156	24	147	23.5	150
9:00	25.5	138	25.8	137	25.5	138
9:15	26.3	134	26.6	133	25.6	138
9:30	25	141	25.8	137	24.9	142
9:45	23.8	148	25	141	25.3	139
10:00	23.7	149	24.7	143	24.7	143
10:15	25.4	139	23.8	148	23.3	151
10:30	24.1	146	24.1	146	22.1	160
10:45	23.3	151	25.2	140	22.1	160
11:00	22.3	158	24.8	142	23.7	149
11:15	22.7	155	23.8	148	22.6	156
11:30	23.1	153	22.8	155	21.6	163

11:45	23.6	149	23.5	150	20.9	169
12:00	22.8	155	23.4	151	21.4	165
12:15	23.2	152	22.4	157	22.1	160
12:30	24	147	23.3	151	21.8	162
12:45	23.7	149	23	153	22.1	160
13:00	23	153	22.8	155	21.7	163
13:15	21.2	166	22.5	157	21.6	163
13:30	22.4	157	22.2	159	21	168
13:45	22.7	155	22.4	157	21.4	165
14:00	21.9	161	22.8	155	21.6	163
14:15	21.5	164	21.8	162	21.7	163
14:30	20.8	170	23	153	20.2	175
14:45	20.1	176	22.1	160	20.6	171
15:00	21.3	166	21	168	22.2	159
15:15	21.4	165	19.9	177	21.6	163
15:30	21	168	21.4	165	22.7	155
15:45	21.5	164	19.5	181	21.6	163
16:00	20.4	173	19.5	181	20.9	169
16:15	19.3	183	20.2	175	20.9	169
16:30	21.9	161	20.1	176	21.4	165
16:45	21.8	162	21.3	166	20.4	173
17:00	21.9	161	20.8	170	21	168
17:15	19.3	183	19	186	19.8	178
17:30	18.8	188	20	176	20.3	174
17:45	17.9	197	20.9	169	22.3	158
18:00	20.3	174	20.1	176	22.3	158
18:15	20.7	170	20.7	170	21.9	161
18:30	22	160	22.7	155	23.5	150
18:45	20.5	172	22.5	157	23.1	153
19:00	21.3	166	22.8	155	22.2	159
19:15	21.8	162	22.8	155	23.5	150
19:30	22	160	23.6	149	23.1	153
19:45	22.3	158	24.4	145	22.5	157
20:00	23.5	150	23.7	149	23.5	150
20:15	22.9	154	24.8	142	23.4	151
20:30	23	153	25.2	140	23.6	149
20:45	24.3	145	26.7	132	23.1	153
21:00	25.3	139	27.9	126	23.1	153
21:15	24.7	143	28.4	124	24	147
21:30	25.5	138	28.3	125	24.8	142
21:45	26.2	135	28.2	125	25.3	139
22:00	26.2	135	28.2	125	24.2	146
22:15	26.5	133	27.9	126	25.3	139
22:30	26.8	132	28	126	25.9	136
22:45	26.4	134	28	126	25.5	138
23:00	26	136	28.1	126	24.5	144
23:15	26	136	27.3	129	24.5	144
23:30	25.8	137	27.7	127	24.6	143
23:45	26	136	28.2	125	24.8	142

BlueTOAD Historical Report

State College SB, Averages

Pair/Route

cabrea-337940: (Y22-State College SB (Lambert to Brea Mall S))

Comparison Index #1

Historical Avg of Tue/Wed/Thu: From 2023-01-17 to 2023-01-19

Comparison Index #2

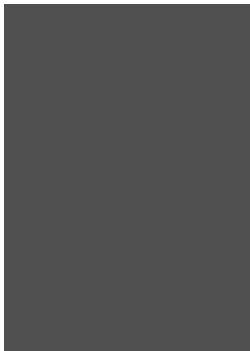
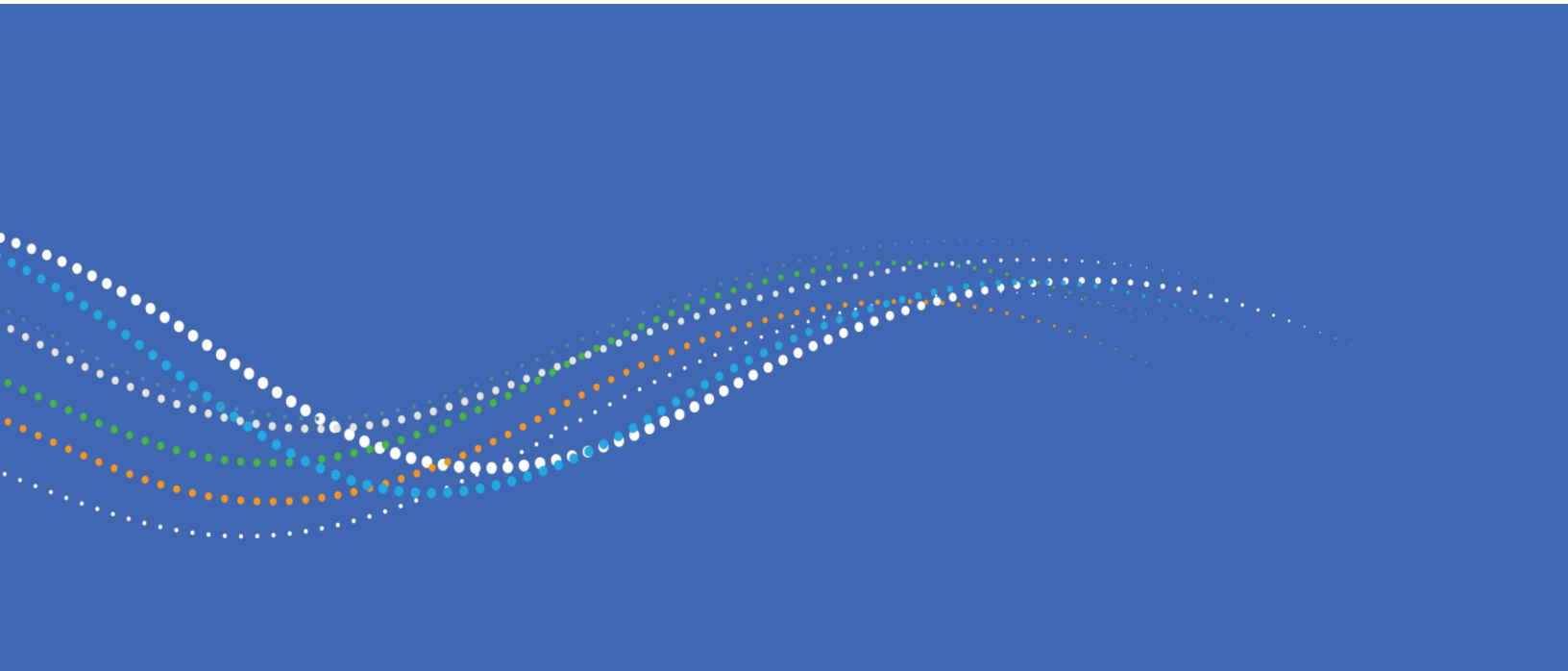
Historical Avg of Tue/Wed/Thu: From 2023-02-07 to 2023-02-09

Comparison Index #3

Historical Avg of Tue/Wed/Thu: From 2023-03-14 to 2023-03-16

Time	January 17 - January 19		February 7 - February 9		March 14 - March 16	
	Tues, Wed, Thurs		Tues, Wed, Thurs		Tues, Wed, Thurs	
	Speed (mph)	Travel Time (s)	Speed (mph)	Travel Time (s)	Speed (mph)	Travel Time (s)
0:00	28.1	126	27.1	130	27.3	129
0:15	28	126	26.8	132	27.5	128
0:30	28	126	26.5	133	28	126
0:45	27.9	126	26.5	133	28.8	122
1:00	27.9	126	26.3	134	29.1	121
1:15	27.8	127	26.2	135	29.3	120
1:30	27.8	127	26.4	134	29.3	120
1:45	27.8	127	26.4	134	29.7	119
2:00	27.8	127	26.7	132	29.8	118
2:15	27.7	127	26.3	134	29.7	119
2:30	27.8	127	26.2	135	29.9	118
2:45	27.8	127	26.3	134	30	118
3:00	27.6	128	26.3	134	29.9	118
3:15	27.6	128	26.3	134	30	118
3:30	27.6	128	26.3	134	29.9	118
3:45	27.5	128	26.6	133	30.4	116
4:00	27.5	128	26.8	132	31.3	113
4:15	27.4	129	26.7	132	31.3	113
4:30	27.2	130	26.8	132	32.2	110
4:45	27.3	129	27.4	129	31.6	112
5:00	26.9	131	28.1	126	31.2	113
5:15	26.9	131	28.4	124	31.9	111
5:30	27.2	130	28.2	125	31.6	112
5:45	27.3	129	27.8	127	31.3	113
6:00	27.3	129	27.9	126	30.8	115
6:15	26.5	133	27.9	126	30.3	116
6:30	26.9	131	27.8	127	29.7	119
6:45	27.8	127	28.3	125	29.2	121
7:00	28.4	124	26	136	28	126
7:15	28.7	123	25.6	138	27.5	128
7:30	26.2	135	23.8	148	25.4	139
7:45	24.1	146	24.4	145	25.7	137
8:00	22.7	155	23.2	152	24.1	146
8:15	23.1	153	22.7	155	24.9	142
8:30	24.1	146	25.1	141	25.6	138
8:45	22.8	155	25.7	137	24.6	143
9:00	23.5	150	26.1	135	25.5	138
9:15	24.1	146	25.6	138	25.7	137
9:30	24.7	143	27	131	27.1	130
9:45	23.7	149	26.7	132	26.6	133
10:00	25.4	139	25.8	137	26.2	135
10:15	25.2	140	25.2	140	25.6	138
10:30	23.1	153	24.8	142	25.4	139
10:45	23.9	148	24.8	142	25	141
11:00	26	136	25.4	139	23	153
11:15	25.8	137	24.7	143	23	153
11:30	23.9	148	23.3	151	25.3	139

11:45	24.8	142	24.3	145	24.5	144
12:00	23.5	150	25	141	22.9	154
12:15	21.3	166	22.9	154	22.3	158
12:30	21.6	163	23.4	151	23.4	151
12:45	23.1	153	22.9	154	23.3	151
13:00	25	141	22.7	155	24.6	143
13:15	23.3	151	23.3	151	24.2	146
13:30	23.3	151	23.7	149	23.2	152
13:45	24.5	144	22.9	154	20.9	169
14:00	22.7	155	22.6	156	21.6	163
14:15	22.5	157	26	136	22.7	155
14:30	22.7	155	25	141	22.7	155
14:45	21.9	161	24.6	143	23.1	153
15:00	23.8	148	25.1	141	24.1	146
15:15	24	147	24.8	142	21.3	166
15:30	23.6	149	24	147	22.4	157
15:45	24.2	146	25.9	136	23.1	153
16:00	23.3	151	24.2	146	23.6	149
16:15	21.1	167	22.9	154	22.9	154
16:30	23.3	151	23.8	148	23.3	151
16:45	21	168	23.1	153	23.6	149
17:00	21.6	163	22.1	160	23.1	153
17:15	20	176	23.8	148	23.8	148
17:30	22.6	156	22.9	154	23.2	152
17:45	22.9	154	24.1	146	23.3	151
18:00	21.8	162	24	147	24.9	142
18:15	24.7	143	26.3	134	26.4	134
18:30	25.3	139	25.2	140	25.5	138
18:45	24.1	146	26.3	134	26.3	134
19:00	23.9	148	26.2	135	24.6	143
19:15	23.7	149	26.3	134	23.8	148
19:30	25.4	139	25.7	137	25.8	137
19:45	26	136	26	136	25.9	136
20:00	25.2	140	26.9	131	24.5	144
20:15	24.4	145	26.4	134	23.7	149
20:30	24.3	145	25.1	141	24.3	145
20:45	24.3	145	26.4	134	24.4	145
21:00	25.4	139	25.7	137	25.3	139
21:15	26.8	132	26.1	135	25.4	139
21:30	27.4	129	26.9	131	25.1	141
21:45	28.6	123	26.7	132	25.8	137
22:00	29.4	120	26.8	132	26	136
22:15	28.8	122	26.8	132	26.1	135
22:30	28.6	123	26.9	131	26.3	134
22:45	28.2	125	27.1	130	26.7	132
23:00	28.4	124	27.4	129	27.8	127
23:15	28.8	122	27.5	128	28.2	125
23:30	28.8	122	27.5	128	28.2	125
23:45	28.4	124	28	126	28.3	125



iteris[®]

1700 Carnegie Avenue, Suite 100
Santa Ana, CA 92705

iteris.com

© 2020 Iteris, Inc. All rights reserved.

City of Brea

PLANNING COMMISSION COMMUNICATION

TO: Honorable Chair and Planning Commission

DATE: 04/25/2023

SUBJECT: Fiscal Year 2023-24 Capital Improvement Program Finding of Conformance with
The General Plan.

RESPECTFULLY SUBMITTED

Joanne Hwang, AICP, City Planner

Prepared by: Ryan Chapman, P.E., Assistant City Engineer

Concurrence: Michael Ho, P.E., Director of Public Works / City Engineer

Attachments

Staff Report

A. Resolution FY23-24 CIP

B. General Plan Conformance Matrix FY23-24

C. Project Environmental Clearance Status FY23-24

City of Brea

Planning Commission

Staff Report

Meeting Date: 4/25/23

TO: Honorable Chair and Planning Commission

FROM: Joanne Hwang, AICP, City Planner

SUBJECT: FISCAL YEAR 2023-24 CAPITAL IMPROVEMENT PROGRAM FINDING OF CONFORMANCE WITH THE GENERAL PLAN

EXECUTIVE SUMMARY

The City's Public Works Department requests the review of the proposed Public Works Department Capital Improvement Program (CIP) projects list recommended for planning, design, or construction during the upcoming 2023-24 fiscal year, and report to the City Council as to conformity with the General Plan.

RECOMMENDATION

Staff recommends that the Planning Commission adopt a resolution (Attachment A) finding that the Fiscal Year (FY) 2023-24 CIP projects, as identified within the General Plan Conformance Matrix (Attachment B), are in conformance with the General Plan.

BACKGROUND

Government Code Section 65401 requires that the Planning Commission review the list of proposed projects in the FY 2023-24 CIP and verify their conformance with the General Plan. Subsequent to the Planning Commission's adoption of the resolution for CIP's general conformance, the City Council will then adopt the proposed CIP budget. The City Council adoption of the proposed CIP budget is anticipated to occur in June of 2023.

DISCUSSION

The goals of the CIP are to enhance the quality of life in the community, to maintain the City's infrastructure, and to improve traffic systems within the City. For FY 2023-24, there are twenty-three (23) new projects proposed as part of the FY 2023-24 CIP, in addition to the number of existing/carryover CIP projects that were determined to be in

conformance with the General Plan in previous years. The new projects proposed in the FY 2023-24 CIP are as follows:

TABLE 1. NEW CIP PROJECTS FOR FY 2023-24

CIP No.	CIP TITLE
Street Improvements	
7331	Downtown Light Pole Repainting
7332	Citywide Street Light LED Upgrades
Traffic Safety Improvements	
7718	Transportation Improvement Nexus Program Update
Water Improvements	
7485	Acacia Street Water Improvements
7486	Berry Street Reservoir Bypass Improvements
7487	Country Road Water Improvements
7488	Cypress Alley Water Improvements
7489	Brea Village Water Improvements
7490	Pioneer & Moonstone Water Improvements
7491	Water Reservoir Security Upgrades
7492	Valencia Reservoir Fencing Replacement
7493	Saturn Water Improvements
Facility Improvements	
7984	Brea Gallery Lighting Upgrades
7985	Brea Senior Center Improvement Project
7986	Western Park Amenity Improvements
7987	Western Park Restroom Upgrades
7988	Tracks Emergency Call Button Improvements
7989	Veterans Memorial Hardscape Improvements
7990	Olinda Oil Museum Drainage & Landscape Improvements
7991	Fire Station No. 2 Dispatch Center Upgrade
7992	Police Department Space Plan Improvements
7993	Civic Center Underground Storage Tank Replacement
7994	Fire Station No. 3 Underground Storage Tank Replacement

Attachment C, which is the General Plan Conformance Matrix for a listing of the proposed FY 2023-24 CIP projects, details the list of the General Plan goals and policies that would be achieved by each CIP project. As such, the FY 2023-24 CIP projects are in conformance with the General Plan.

ENVIRONMENTAL ASSESSMENT

The project has been assessed in accordance with the California Environmental Quality Act (CEQA) Guidelines and the environmental regulations of the City. The requested action is exempt from CEQA pursuant to CEQA Guidelines Section 15061(b)(3) since it can be seen with certainty that there is no possibility that the requested action, which is to determine whether the FY 2023-24 CIP is consistent with the General Plan goals and policies, may have a significant effect on the environment.

In addition, the environmental documentation and/or clearance has been completed for a number of projects. Environmental documentation and/or clearance for the other projects will be completed prior to the start of construction. Attachment C lists the projects in the CIP for the FY 2023-24 and provides a summary of the status of their environmental clearance.

Prepared by:

Ryan Chapman, P.E., Assistant City Engineer

Concurred by:

Michael Ho, P.E., Public Works Director/City Engineer

ATTACHMENTS

- A. Draft Resolution FY2023-24 CIP
- B. General Plan Conformance Matrix FY2023-24
- C. Project Environmental Clearance Status FY2023-24

RESOLUTION NO. PC 2023-__

A RESOLUTION OF THE PLANNING COMMISSION OF THE CITY OF BREA FINDING THE FISCAL YEAR 2023-24 CAPITAL IMPROVEMENT PROGRAM IN CONFORMANCE WITH THE GENERAL PLAN PURSUANT TO SECTION 65401 OF THE GOVERNMENT CODE.

A. RECITALS.

(i) The Planning Commission of the City of Brea has reviewed for conformity with the General Plan, as required by Section 65401 of the Government Code, a list of projects being planned, designed, or constructed in Fiscal Year (FY) 2023 - 24 by the Capital Improvement Program (CIP).

(ii) All projects, as listed in Exhibit A (General Plan Conformance Matrix), are located in the City of Brea and are consistent with policies of the City.

(iii) All legal prerequisites to the adoption of this Resolution have occurred.

B. RESOLUTION.

NOW, THEREFORE, BE IT FOUND, DETERMINED AND RESOLVED by the Planning Commission of the City of Brea as follows:

1. In all respects as set forth in Recitals, Part A, of this resolution.
2. The FY 2023-24 CIP projects, identified within the General Plan Conformance Matrix, have been reviewed with regard to their conformance with the General Plan.
3. Said FY 2023-24 CIP projects are in conformity with the General Plan, pursuant to Section 65401 of the Government Code.
4. The proposed CIP has been found to serve the implementation of various goals and policies of the General Plan as specifically outlined within the General Plan Conformance Matrix.
5. This Resolution shall constitute this Commission's report and recommendation to the City Council as required by the Government Code.

6. The Planning Commission also finds and determines that the requested action to be exempt from the requirements of the California Environmental Quality Act (CEQA) pursuant to Section 15061(b)(3) since it can be seen with certainty that there is no possibility that the requested action, which is to determine whether the FY 2023-24 CIP is consistent with the General Plan goals and policies, may have a significant effect on the environment.

7. The Secretary of this Commission shall certify to the adoption of this Resolution and forthwith transmit a certified copy to the City Council, as the report required to meet California Government Code 65401.

ADOPTED AND APPROVED this 25th day of April 2023.

Chair, Planning Commission

I, Joanne Hwang, Secretary to the Planning Commission of the City of Brea, do hereby certify that the foregoing Resolution was introduced at a regular meeting of the Planning Commission of the City of Brea held on the 25th day of April 2023, and was finally passed at a regular meeting of the Planning Commission of the City of Brea, held on the 25th day of April, 2023, by the following votes:

AYES: COMMISSIONERS:

NOES: COMMISSIONERS:

ABSENT: COMMISSIONERS:

ABSTAIN: COMMISSIONERS:

ATTEST: _____
Secretary, Planning Commission

**GENERAL PLAN CONFORMANCE MATRIX
FISCAL YEAR 2023-24 CAPITAL IMPROVEMENT PROGRAM**

PROJECT NUMBER	DESCRIPTION	COMMUNITY DEVELOPMENT	COMMUNITY RESOURCES	PUBLIC SAFETY
<u>STREET IMPROVEMENTS</u>				
7219	Traffic Calming Improvements	CD 2.3, 4.3, 6.4, 11.5		PS 3.1
7251	SR-57 Freeway/Lambert Road Interchange	CD 10.1, 11.1, 11.6, 27.1, 28.1	CR 13.1	PS 3.1
7278	Imperial Hwy. and Berry St. Intersection Improvements	CD 11.1, 11.6, 27.1, 27.2, 28.1	CR 13.1	PS 3.1
7299	Brea Boulevard Street Improvements	CD 1.12, 11.1, 27.2		PS 3.1
7305	Brea Boulevard Widening	CD 10.3, 10.4, 10.5, 27.2		PS 3.1
7306	Imperial Hwy/SR-57 Interchange Improvements	CD 10.3, 10.4, 10.5, 27.2		PS 3.1
7312	Citywide Slurry Seal Program	CD 1.12, 27.2		
7313	Citywide Sidewalk Replacement	CD 2.4, 13.2		PS 3.1
7322	Country Hills Subdivision Pavement/Water Rehabilitation	CD 1.12, 11.1, 27.2		
7324	Berry Street Sidewalk Installation	CD 1.7, 1.8	CR 13.5	PS 3.1
7326	Walnut Way Street Improvements	CD 1.12, 11.1, 27.2		PS 3.1
7327	Central Avenue & State College Street Improvements	CD 1.12, 11.1, 27.2		PS 3.1
7328	Brea Downtown Parklets Project	CD 1.6, 4.5, 12.6	CR 1.1, 1.5, 3.4	
7329	Birch Street Improvements S. Associated to Valencia	CD 1.12, 11.1, 27.2		PS 3.1
7330	Storm Drain Master Plan	CD 14.1	CR 12.2	PS 7.1, 7.2, 7.6
7331	Downtown Light Pole Repainting	CD 2.5, 27.2		
7332	Citywide Street LED Upgrades	CD 1.7, 1.12, 13.2, 27.2		PS 3.1
<u>TRAFFIC SAFETY ENHANCEMENTS</u>				
7218	Traffic Signal Controller Upgrade	CD 2.3, 4.3, 11.1	CR 13.1	
7704	Emergency Changeable Message Signs		CR 13.1, 13.7	PS 1.4, 3.1
7716	Lambert Road Traffic Signal Synchronization	CD 2.3, 10.3, 11.1, 11.6	CR 13.1	PS 1.2, 1.5
7717	Cliffwood Neighborhood Traffic Calming Improvements	CD 2.3, 11.5		PS 3.1
7718	Transportation Improvement Nexus Program Update	CD 11.1, 11.2, 11.6, 27.2	CR 13.1	PS 3.1

PROJECT NUMBER	DESCRIPTION	COMMUNITY DEVELOPMENT	COMMUNITY RESOURCES	PUBLIC SAFETY
<u>WATER IMPROVEMENTS</u>				
7442	Miscellaneous Water Improvement Program	CD 1.12, 14.2		
7454	Walnut-Orange-Juniper Waterline Improvements	CD 1.12, 14.2		
7462	Enterprise Tract Water Improvements	CD 1.12, 14.2		
7465	Candlewood Tract Water Main Replacement	CD 1.12, 14.2		
7466	South Brea Neighborhood Water Main Replacement	CD 1.12, 14.2		
7468	Buttonwood Tract Water Main Replacements	CD 1.12, 14.2		
7469	Pepper Tree Tract Water Main Replacements	CD 1.12, 14.2		
7470	Replace Pump at Carbon Canyon Booster No. 3	CD 1.12, 14.2		
7471	Construct Enclosure for Booster Station No. 3	CD 1.12, 14.2		
7472	Oleander & Catalpa Water Line Replacement	CD 1.12, 14.2		
7473	Valencia Reservoir Repainting	CD 27.2		
7474	AMR (Meter Reading) Upgrade to AMI	CD 14.1, 23.6	CR 11.3	
7475	Booster Pump Enclosure & Restroom At Olinda Ranch Park	CD 14.2, 27.2		
7476	N. Associated Rd. New High Pressure Water Line	CD 1.12, 14.2		
7477	Valencia Pipeline Replacement	CD 1.12, 14.2		
7478	Decommission Puente Booster Pump Station	CD 1.12, 14.2		
7479	Lotus Place Water Line Improvements	CD 1.12, 14.2		
7480	Roscoe Street Water Line Improvements	CD 1.12, 14.2		
7481	Brea Corsican Villas Water Line Improvements	CD 1.12, 14.2		
7482	Olinda Village Water Line Improvements	CD 1.12, 14.2		
7483	Replace Generator at Berry Street Booster Pump Station	CD 1.12, 14.2		
7484	Puente, Site, State College Water Main Replacements	CD 1.12, 14.2		
7485	Acacia Street Water Improvements	CD 1.12, 14.2		
7486	Berry Street Reservoir Bypass Improvements	CD 14.2, 27.1		
7487	Country Road Water Improvements	CD 1.12, 14.2		
7488	Cypress Alley Water Improvements	CD 1.12, 14.2		
7489	Brea Village Water Improvements	CD 1.12, 14.2		
7490	Pioneer & Moonstone Water Improvements	CD 1.12, 14.2		
7491	Water Reservoir Security Upgrades	CD 27.2		PS 1.8
7492	Valencia Reservoir Fencing Replacement	CD 27.2		PS 2.2

PROJECT NUMBER	DESCRIPTION	COMMUNITY DEVELOPMENT	COMMUNITY RESOURCES	PUBLIC SAFETY
<u>WATER IMPROVEMENTS (CONTINUED)</u>				
7493	Saturn Water Improvements	CD 1.12, 14.2		
7965	Rehabilitate Ring Road At Berry Street Reservoir	CD 27.2		
<u>SEWER IMPROVEMENTS</u>				
7617	Sewer Mainline Relining	CD 1.12, 14.2		
7626	South Brea Sewer Repairs	CD 1.12, 14.2		
7629	Randolph Ave & Imperial Hwy Sewer Capacity Improvements	CD 14.2		
7630	Walling Ave Sewer Capacity Improvements	CD 14.2		
7631	Briarwood Lift Station Replacement	CD 1.12, 14.2		
7632	Carbon Canyon Access Road Phase 1-3	CD 14.2		
7633	Brea Creek Siphon S-2 Analysis	CD 14.2		
<u>FACILITY IMPROVEMENTS</u>				
7923	Fire Station No. 1 Seismic Upgrades	CD 1.12		
7936	City Facility & Median Landscape Improvements	CD 14.2	CR 11.4, 11.5, 12.2	
7940	Arovista Park Restroom Repairs	CD 1.12		
7946	Western Extension to the Tracks at Brea	CD 1.7, 11.3, 12.5, 13	CR 1.6, 3.5, 6.3, 7.1, 7.3, 13.5	
7947	Arovista Park (Lower) Parking Lot Rehabilitation	CD 1.12, 27.2		
7948	Arovista Park (Upper) Parking Lot Rehabilitation	CD 1.12, 27.2		
7952	Tracks Segment 3 Drainage Repairs	CD 1.7, 13.1, 13.2		
7956	Tamarack Parking Lot Asphalt Rehabilitation	CD 1.12		
7957	Park Irrigation Design & Replacement	CD 1.12, 22	CR 1.1, 1.2, 11.1, 11.4, 11.5	
7960	New Switch Gear Boxes at Arovista & Country Hills Parks	CD 27.2	CR 2.1	PS 3.2
7970	Energy Management Program Upgrade	CD 27.2		
7971	Security Upgrades at Civic Center, Senior Center & Yard	CD 27.2		
7974	Freight Elevator Upgrades at Civic Center	CD 27.2		
7975	Senior Center & Pioneer Hall Roofs	CD 27.2		
7977	Senior Center Generator Project	CD 27.2		PS 1.4
7978	Arovista Park Modernization Project	CD 1.12, 27.2		

PROJECT NUMBER	DESCRIPTION	COMMUNITY DEVELOPMENT	COMMUNITY RESOURCES	PUBLIC SAFETY
7979	Mechanical Upgrades to City Facilities	CD 27.2		
7980	Fire Station On-site Repairs	CD 27.2		PS 1.4
7981	Country Hills Tennis Court Lightpole Improvements	CD 1.7, 13.2, 18.0	CR 1.1, 1.2, 2.1	PS 3.3
7982	Police Department Dispatch & Comm Dev Renovation Project	CD 27.2		PS 1.1
7983	GIS Record Document Conversion	CD 1.12, 14.1, 23.6		PS 1.12
7984	Brea Gallery Lighting Upgrades	CD 27.2		PS 2.2, 2.3
7985	Brea Senior Center Improvement Project	CD 1.12, 3.2	CR 1.1, 1.2	
7986	Western Park Amenity Improvements	CD 1.12, 27.2	CR 1.1, 1.2	
7987	Western Park Restroom Upgrades	CD 1.12, 27.2	CR 1.1, 1.2	
7988	Tracks Emergency Call Button Improvements	CD 13.1, 13.2	CR 1.1	PS 1.8, 1.9
7989	Veterans Memorial Hardscape Improvements		CR 14.8, 15.3	
7990	Olinda Oil Museum Drainage & Landscape Improvements		CR 2.1	PS 7.4
7991	Fire Station No. 2 Dispatch Center Upgrade	CD 27.2		PS 1.2, 1.4
7992	Police Department Space Plan Improvements			PS 1.1, 1.2
7993	Civic Center Underground Storage Tank Replacement	CD 27.2		
7994	Fire Station No. 3 Underground Storage Tank Replacement	CD 27.2		
<u>GOLF COURSE IMPROVEMENTS</u>				
7968	Cart Path, Restroom, and Landscaping Improvements at Birch Hills GC	CD 27.2	CR 2.1	
7969	Clubhouse Restroom and Bridge Improvements at Brea Creek GC	CD 27.2	CR 2.1	

Project Environmental Clearance Status

Section I – Environmental Findings Completed/Recorded

Categorical Exempt Projects

Categorical Exempt Projects	Section 15301
7218 Traffic Signal Controller Upgrade	Class 1
7219 Traffic Calming Improvements	Class 1
7299 Brea Boulevard Street Improvements	Class 1
7312 Citywide Slurry Seal Program	Class 1 (c)
7313 Citywide Sidewalk Replacement	Class 1 (c)
7322 Country Hills Subdivision Pavement/Water Rehabilitation	Class 1
7324 Berry Street Sidewalk Installation	Class 1
7326 Walnut Way Street Improvements	Class 1 (b)(c)
7327 Central Avenue & State College Street Improvements	Class 1 (c)
7329 Birch Street Improvements S. Associated to Valencia	Class 1 (c)
7330 Storm Drain Master Plan	Class 1 (c)
7442 Miscellaneous Water Improvement Program	Class 1
7462 Enterprise Tract Water Improvements	Class 1
7465 Candlewood Tract Water Main Replacement	Class 1
7470 Replace Pump at Carbon Canyon Booster No. 3	Class 1 (c)
7473 Valencia Reservoir Repainting	Class 1 (d)
7483 Replace Generator at Berry Street Booster Pump Station	Class 1 (b)
7617 Sewer Mainline Relining	Class 1 (b)
7626 South Brea Sewer Repairs	Class 1 (d)
7629 Randolph Ave & Imperial Hwy Sewer Capacity Improvements	Class 1 (b)
7630 Walling Ave Sewer Capacity Improvements	Class 1 (b)
7704 Emergency Changeable Message Signs	Class 1 (d)
7716 Lambert Road Traffic Signal Synchronization	Class 1 (d)
7717 Cliffwood Neighborhood Traffic Calming Improvements	Class 1 (c)(d)
7923 Fire Station No. 1 Seismic Upgrades	Class 1 (d)
7940 Arovista Park Restroom Repairs	Class 1 (d)
7947 Arovista Park (Lower) Parking Lot Rehabilitation	Class 1 (d)
7948 Arovista Park (Upper) Parking Lot Rehabilitation	Class 1 (d)
7956 Tamarack Parking Lot Asphalt Rehabilitation	Class 1 (c)
7965 Rehabilitate Ring Road At Berry Street Reservoir	Class 1 (c)
7968 Cart Path, Restroom, and Landscaping Improvements at Birch Hills GC	Class 1 (d)
7969 Clubhouse Restroom and Bridge Improvements at Brea Creek GC	Class 1 (a)(d)
7970 Energy Management Program Upgrade	Class 1 (a)(d)
7971 Security Upgrades at Civic Center, Senior Center & Yard	Class 1 (a)
7974 Freight Elevator Upgrades at Civic Center	Class 1 (a)(d)
7975 Senior Center & Pioneer Hall Roofs	Class 1 (a)
7980 Fire Station On-site Repairs	Class 1 (a)(d)
7982 Police Department Dispatch & Comm Dev Renovation Project	Class 1 (a)

Categorical Exempt Projects

7454 Walnut-Orange-Juniper Waterline Improvements
 7466 South Brea Neighborhood Water Main Replacement
 7468 Buttonwood Tract Water Main Replacements
 7469 Pepper Tree Tract Water Main Replacements
 7472 Oleander & Catalpa Water Line Replacement
 7476 N. Associated Rd. New High Pressure Water Line
 7477 Valencia Pipeline Replacement
 7478 Decommission Puente Booster Pump Station
 7479 Lotus Place Water Line Improvements
 7480 Roscoe Street Water Line Improvements
 7481 Brea Corsican Villas Water Line Improvements
 7482 Olinda Village Water Line Improvements
 7484 Puente, Site, State College Water Main Replacements
 7631 Briarwood Lift Station Replacement
 7957 Park Irrigation Design & Replacement
 7960 New Switch Gear Boxes at Arovista & Country Hills Parks
 7979 Mechanical Upgrades to City Facilities
 7981 Country Hills Tennis Court Lightpole Improvements

Section 15302

Class 2 (c)
 Class 2 (c)
 Class 2 (c)
 Class 2 (c)
 Class 2 (c)
 Class 2 (c)
 Class 2 (c)
 Class 1 (l)
 Class 2 (c)
 Class 2 (c)
 Class 2 (c)
 Class 2 (c)
 Class 2 (c)
 Class 2 (c)
 Class 2 (c)
 Class 2 (c)
 Class 2 (c)

Categorical Exempt Projects

7278 Imperial Hwy. and Berry St. Intersection Improvements
 7328 Brea Downtown Parklets Project
 7471 Construct Enclosure for Booster Station No. 3
 7474 AMR (Meter Reading) Upgrade To AMI
 7475 Booster Pump Enclosure & Restroom at Olinda Ranch Park
 7977 Senior Center Generator Project
 7978 Arovista Park Modernization Project

Section 15303

Class 1 (d)

 Class 3 (d)
 Class 1 (b)
 Class 3
 Class 3
 Class 1 (e)

Categorical Exempt Projects

7936 City Facility & Median Landscape Improvements
 7946 Western Extension to the Tracks at Brea
 7952 Tracks Segment 3 Drainage Repairs

Section 15304

Class 4 (b)
 Class 4 (h)
 Class 4 (b)

Categorical Exempt Projects

7983 GIS Record Document Conversion

Section 15306

Class 6

Statutory Exemption

7633 Brea Creek Siphon S-2 Analysis

Section 15262**Mitigated Negative Declaration**

7251 SR-57 Freeway / Lambert Road Interchange

Section II – Environmental Findings To Be Completed/Recorded

7305	Brea Boulevard Widening
7306	Imperial Hwy/SR-57 Interchange Improvements
7331	Downtown Light Pole Repainting
7332	Citywide Street Light LED Upgrades
7485	Acacia Street Water Improvements
7486	Berry Street Reservoir Bypass Improvements
7487	Country Road Water Improvements
7488	Cypress Alley Water Improvements
7489	Brea Village Water Improvements
7490	Pioneer & Moonstone Water Improvements
7491	Water Reservoir Security Upgrades
7492	Valencia Reservoir Fencing Replacement
7493	Saturn Water Improvements
7632	Carbon Canyon Access Road Phase 1-3
7718	Transportation Improvement Nexus Program Update
7984	Brea Gallery Lighting Upgrades
7985	Brea Senior Center Improvement Project
7986	Western Park Amenity Improvements
7987	Western Park Restroom Upgrades
7988	Tracks Emergency Call Button Improvements
7989	Veterans Memorial Hardscape Improvements
7990	Olinda Oil Museum Drainage & Landscape Improvements
7991	Fire Station No. 2 Dispatch Center Upgrade
7992	Police Department Space Plan Improvements
7993	Civic Center Underground Storage Tank Replacement
7994	Fire Station No. 3 Underground Storage Tank Replacement